

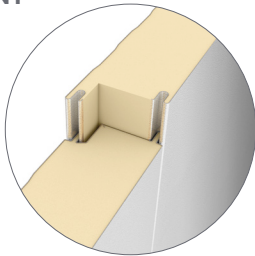
FLAT

Insulated Metal Panel

TC Flat is the preferred exterior wall panel for creating a high-profile architectural appearance for commercial and industrial buildings, including manufacturing, dry goods distribution centers, automotive assembly plants, aircraft hangers, offices, and schools.

Expertly crafted by industry veterans, you can rely on TrueCore's Flat for problem-free construction and building operation.

SIDE JOINT



PANEL PROFILE AND CROSS SECTION



| | |
|--|---|
| EXTERIOR AND INTERIOR PROFILE & TEXTURE | Flat profile with non-directional stucco embossing |
| EXTERIOR FACINGS | 22 Ga. G-90 galvanized steel or AZ50 aluminum coated steel |
| INTERIOR FACINGS | 26, 24, 22 Ga. G-90 galvanized steel or AZ50 aluminum coated steel 26, 24 Ga. 304L and 316L stainless steel with 2B finish |
| EXTERIOR COATINGS | Siliconized Polyester (SMP) Fluoropolymer (PVDF) Flurothane* II, IV, V |
| INTERIOR COATINGS | Polyester Siliconized Polyester (SMP) Fluoropolymer (PVDF) Flurothane* II, IV, V PVC Plastisol |
| WIDTH | 40" |
| LENGTH | 8'-0" to 32'-0" standard <i>Contact TrueCore for information and pricing on longer lengths.</i> |
| THICKNESS | 2", 3", 4" |
| CORE | Foamed-in-place Class 1 rated polyisocyanurate |
| JOINT | Double Tongue and Groove for concealed fastening |
| R-VALUE | R-8 per inch of thickness (nominal) |

**Flurothane is a registered trademark of The Sherwin-Williams Company*